



LUPC & SUPC Responsible
Procurement Group Meeting

Responsible
Procurement at

N **NATURAL
HISTORY
MUSEUM**

Andy Davies and Kimberley Lewis







ZooKeys 842: 1–65 (2019)
doi: 10.3897/zookeys.842.29243
<http://zookeys.pensoft.net>

RESEARCH ARTICLE

A peer-reviewed open-access journal
ZooKeys
Launched to accelerate biodiversity research

An annotated type catalogue of seven genera of operculate land snails (Caenogastropoda, Cyclophoridae) in the Natural History Museum, London

Chirasak Sutcharit¹, Jonathan D. Ablett², Somsak Panha¹

¹ *Animal Systematics Research Unit, Department of Biology, Faculty of Science, Chulalongkorn University, Bangkok 10330, Thailand* ² *Division of Higher Invertebrates, Natural History Museums, London, SW7 5BD, UK*

Corresponding author: Chirasak Sutcharit (jirasak4@yahoo.com)



“A future where people and planet thrive”



Protecting labour rights in our supply chain

NHM's approach

- “A future where people and planet thrive”
- Sedex
- Electronics Watch
- Awareness and Preparedness







NHM and Sedex

- Focus on garments and toys
- Require all new suppliers – and key contractors' suppliers – to join the database
- Visibility of shared factory audits and corrective action plans

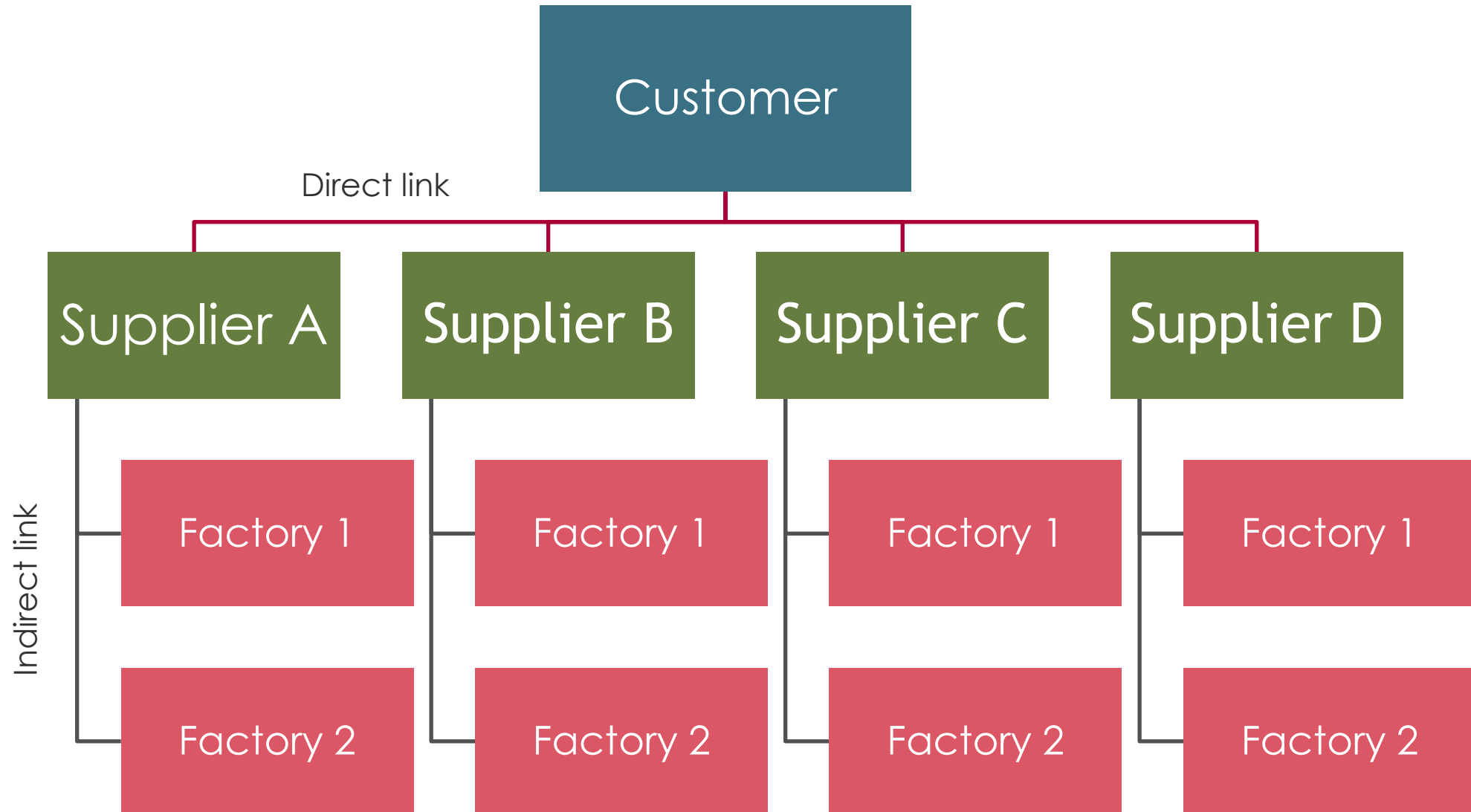




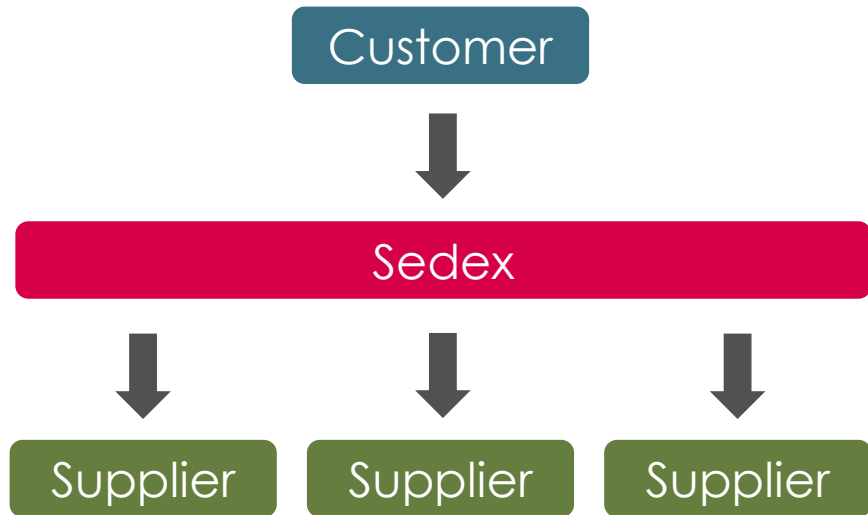
“Using the Sedex system to link to our suppliers and view their current audits makes the process simple yet very effective. We can view up to date and robust information and the suppliers are spared the inconvenience of yet another audit”

Sharon Childs
The Sourcing Team

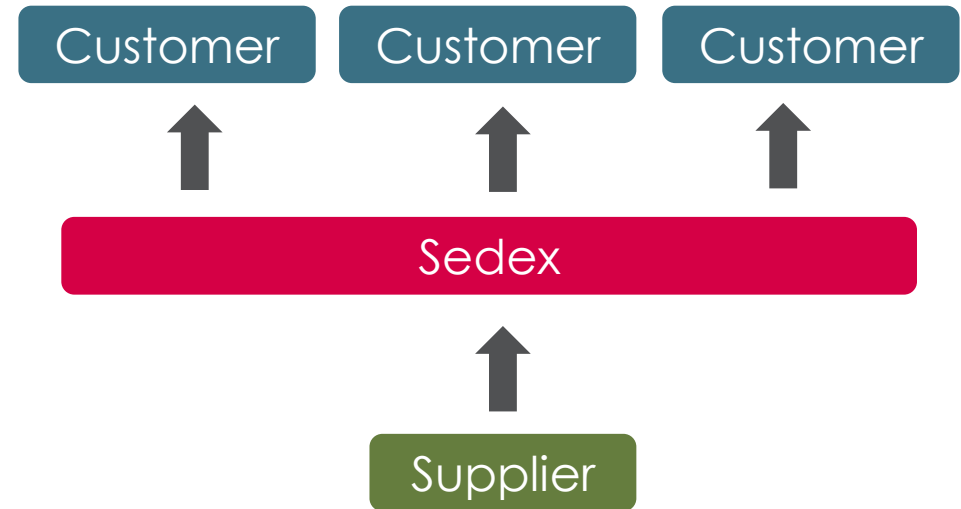
Customer account structure



The Sedex model



Buyers can manage all their suppliers' data in one place, run reports and carry out risk assessments.



Suppliers can share data on the responsible practices of their business with multiple buyers, in an industry-standard format

Where Sedex operates



Drawbacks of Factory Audits

- Factory audits offer just a snapshot of conditions
- Careful selection of reputable auditors is essential
- Only unannounced audits leave no opportunity for audit preparation
- An audit may only consider a single tier of a product's supply chain
- Resource-hungry for busy buyers, if doing it properly.

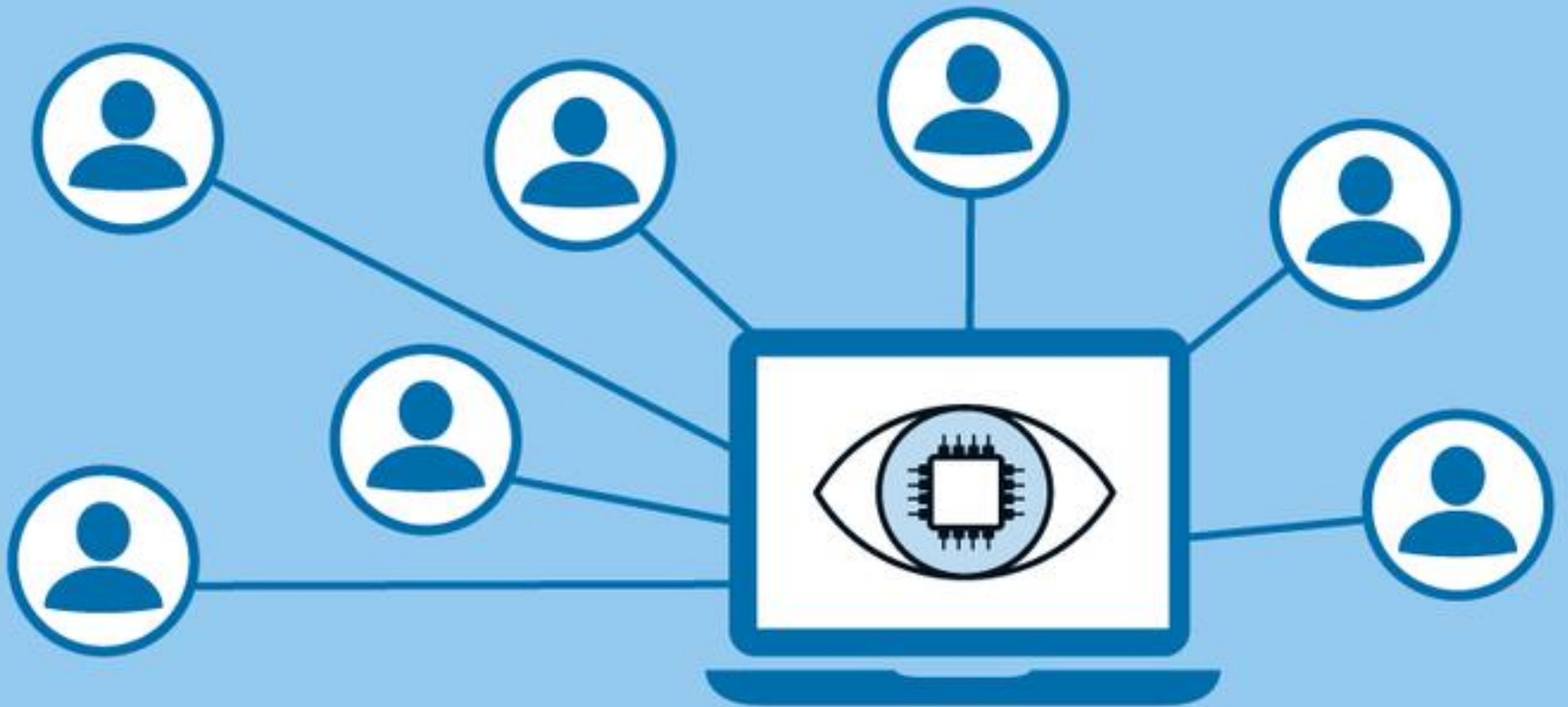


Advantages



- They provide evidence of what an expert party witnessed at the factory on a given day.
- They can provide vital information.
- They're not just for garments!





electronicswatch.org



NHM and Electronics Watch

- Developing a 'tag-team' approach
- NHM attends EW webinars and receives reports from monitors
- Hears about corrective action requirements
- Raises them with manufacturers and presses for change



Engaging our supply chain

Our Mission

“To create advocates for the planet.”



- Partner
- Collaborate
- Activate

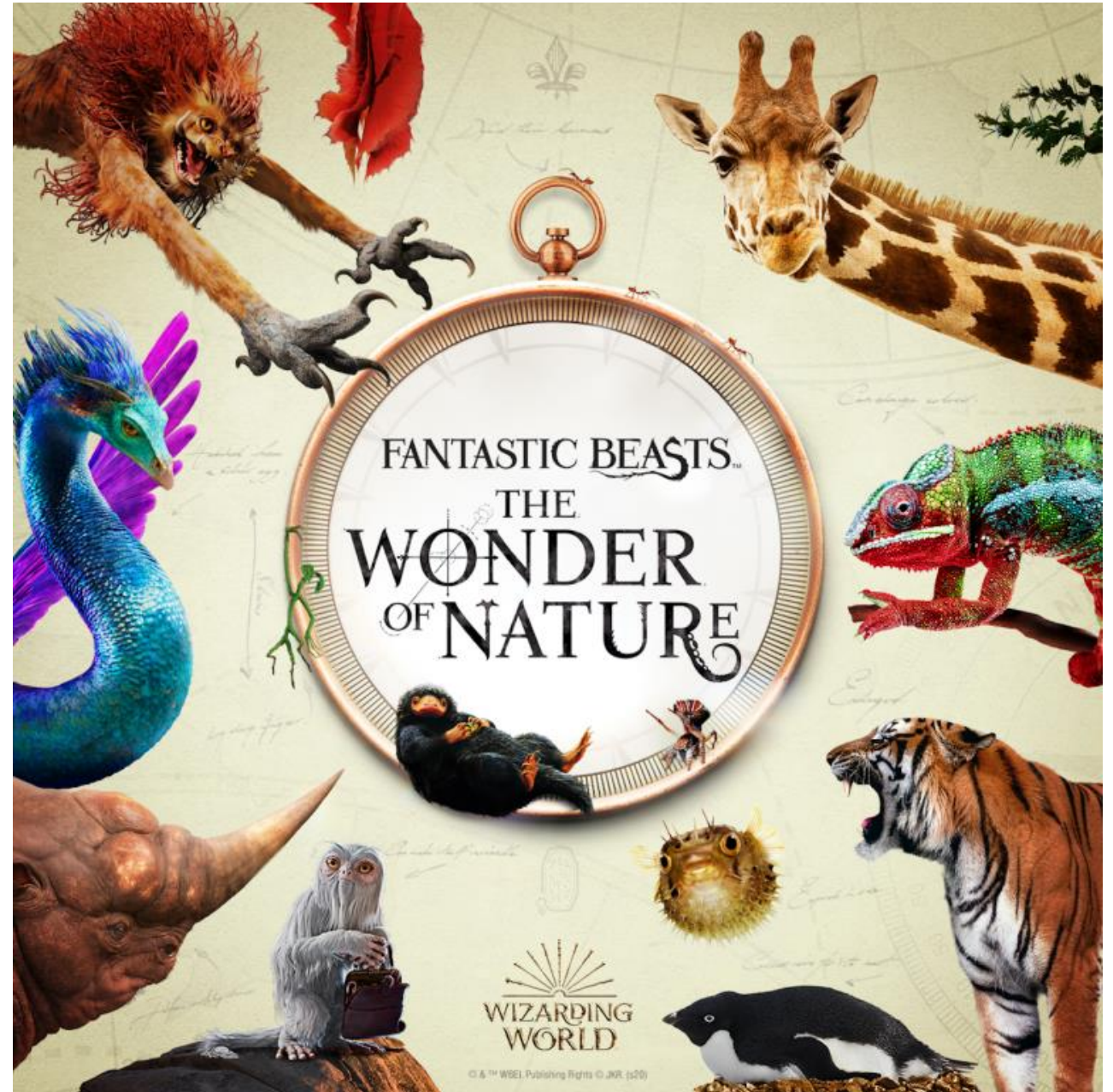
Positive Change



Taking account of social value: PPN 06/20

About the Tender

- Transportation of setworks for the *Fantastic Beasts™: The Wonder of Nature* touring exhibition
- Used the Find-a-Tender Service (FTS)
- Applied the Social Value Model from PPN 06/20
- Theme 3: Fighting Climate Change



The Question

Using a maximum of xx characters, describe the commitment your organisation will make to ensure that opportunities under the contract deliver the Policy Outcome and Model Award Criteria.

Please include:

- your 'Method Statement', stating how you will achieve this and how your commitment meets the Award Criteria, and
- a timed project plan and process, including how you will implement your commitment

and by when.

- Also, how you will monitor, measure and report on your commitments/the impact of your proposals.
- You should include but not be limited to:
 - A timed action plan
 - use of metrics
 - tools/processes used to gather data
 - reporting
 - feedback and improvement
 - transparency.



The Question

- Word limit: 750 words
- Scoring: 5-band scoring regime from Section 3.
- Weighting: 10%
- Criteria: Included in ITT
- Minimum score: Not applied.





Evaluating the Responses

- Criteria 1: Additional Environmental Benefits
- Criteria 2: Influence Environmental Protection & Improvement
- Looked for comprehensive answers that met the award criteria and sub-criteria through good quality responses.
- Scored the quality of the social value offered.

Challenges

- Responses must not be compared against each other for the purpose of scoring.
- Limited knowledge of good environmental practices in logistics
- Spotting the CSR.



Reporting Metrics

- Reduction in GHG emissions.
- Social Value deliverables to be incorporated in the contract.
- Contract manager responsible for monitoring and assessing performance.

